

XOP2^{ac} XOP3^{ac} Technical Data



XOP2^{ac} XOP3^{ac} Technical Data

VDI 2198

Specification	1.1	Manufacturer		OM	
	1.2	Manufacturer's type designation		XOP2 ^{ac} Mono	
	1.3	Drive: electric, diesel, petrol, fuel gas, mains		Electric	
	1.4	Operator type: hand, with 2 operators, standing, seated, order picker.		Standing	
	1.5	Capacity / Load	Q (t)	1,1	
	1.6	Load centre distance	c (mm)	400 / 600	
	1.8	Load distance, centre of drive axle to fork	x (mm)	298	
	1.9	Distance between axles	y (mm)	1447	
	Weights	2.1	Service weight (including battery)	kg	2600
2.2		Unloaded axle load (front/rear)	kg	845 / 2855	
2.3		Axle loading unladen (front/rear)	kg	1415 / 1185	
Wheels and Tyres	3.1	Tyres: solid rubber, superelastic, pneumatic, polyurethane		Vulkollan	
	3.2	Front wheel dimensions	mm	Ø 310 X 125	
	3.3	Rear wheel dimensions	mm	Ø 170 X 152	
	3.5	Wheels: number front/rear (x=driven wheels)		1x / 2	
	3.6	Front tread	b10 (mm)	-	
	3.7	Rear tread	b11 (mm)	700	
	Dimensions and Overall Sizes	4.2	Height, mast lowered	h1 (mm)	2250
4.3		Free lift	h2 (mm)	-	
4.4		Lift	h3 (mm)	1725	
4.5		Height, mast extended	h4 (mm)	4065	
4.7		Height of overhead guard	h6 (mm)	2340	
4.8		Seat height / stand height	h7 (mm)	240	
4.11		Additional lift	h9 (mm)	740	
4.14		Height of elevated platform	h12 (mm)	1965	
4.14.1		Picking height (h12 +1600 mm)	h28 (mm)	4665	
4.15		Lowered fork height	h13 (mm)	65	
4.19		Overall length	l1 (mm)	3180	
4.20		Length to face of forks	l2 (mm)	1982	
4.21		Overall width	b1 /b2(mm)	880 / 900	
4.22		Fork dimensions	s/e/l (mm)	60 / 120 / 1200	
4.23		Fork carriage DIN 15173, Class/type, A/B		Welded forks ⁽⁴⁾	
4.24		Fork carriage plate width	b3 (mm)	660	
4.25		Distance between fork-arms	b5 (mm)	560	
4.27		Width on guide rolls	b6 (mm)	920	
Performance		4.31	Ground clearance, laden, below mast	m1 (mm)	30
		4.32	Ground clearance, centre of wheelbase	m2 (mm)	50
	4.34	Aisle width for pallets 800 x 1200 crossways (b12 x l6)	Ast (mm)	1080 ⁽²⁾	
	4.35	Turning radius	Wa (mm)	1685	
	4.42	Track change aisle for pallets 800 x 1200 (b12 x l6)	Au (mm)	3436	
	5.1	Travel speed (laden/unladen)	km/h	11,0 ⁽¹⁾ / 11,0 ⁽¹⁾	
	5.2	Lifting speed (laden/unladen)	m/s	0,36 / 0,39	
	5.3	Lowering speed (laden/unladen)	m/s	0,35 / 0,35	
	5.9	Acceleration time, laden/unladen	s	7,0 / 7,0	
	5.10	Service brake		Electric	
Engine	6.1	Drive motor, rating KB 60'	kW	4,6	
	6.2	Lift motor, rating 15% ED	kW	11,5	
	6.3	Battery acc. IEC 254 – 2; A, B, C, no		IEC 254-2; A	
	6.4	Voltage / nominal capacity	V / Ah	48 / 420 L	
	6.5	Battery weight (± 5%)	kg	720	
Others	8.1	Drive type		MOSFET	
	8.4	Sound level at the driver's ear	dB (A)	< 68	

The values presented are to be taken as indicative and not binding; they refer to the standard equipment

- 1) Speed according to EN 1726-2
- 2) Min working aisle Ast with cab 900 and truck mechanical guide
- 3) Min working aisle Ast with cab 1200 and truck mechanical guide
- 4) Available with auxiliary lift and Fem adjustable fork
- 5) XOP3 with TX mast 3900 mm only with b₁=b₂= 1380 mm chassis

OM	OM	OM
XOP2 ^{ac} Simplex	XOP3 ^{ac} Simplex	XOP3 ^{ac} Triplex
Electric	Electric	Electric
Standing	Standing	Standing
1,1	1,2	1,2
400 / 600	400 / 600	400 / 600
343	343	388
1447	1557	1557
2700	2950	3150
680 / 3120	780 / 3370	880 / 3470
1360 / 1340	1520 / 1430	1690 / 1540
Vulkollan	Vulkollan	Vulkollan
Ø 310 X 125	Ø 310 X 125	Ø 310 X 125
Ø 170 X 152	Ø 170 X 152	Ø 170 X 152
1x / 2	1x / 2	1x / 2
-	-	-
700	900	900
2250	2250	2250
-	-	-
2825	2825	4390
5165	5165	6730
2340	2340	2340
240	240	240
740	740	740
3065	3065	4630
4665	4665	6230
65	65	65
3227	2937	2982
2027	2137	2182
880 / 900	1180 / 1200	1180 / 1200 ⁽⁵⁾
60 / 120 / 1200	60 / 120 / 800	60 / 120 / 800
Welded forks ⁽⁴⁾	Welded forks ⁽⁴⁾	Welded forks ⁽⁴⁾
660	660	660
560	640	640
920	1375	1375
60	30	30
50	50	50
1080 ⁽²⁾	1380 ⁽³⁾	1380 ⁽³⁾
1685	1795	1795
3480	3590	3633
11,0 ⁽¹⁾ / 11,0 ⁽¹⁾	11,0 ⁽¹⁾ / 11,0 ⁽¹⁾	11,0 ⁽¹⁾ / 11,0 ⁽¹⁾
0,36 / 0,39	0,36 / 0,39	0,36 / 0,39
0,35 / 0,35	0,35 / 0,35	0,35 / 0,35
7,0 / 7,0	7,0 / 7,0	7,0 / 7,0
Electric	Electric	Electric
4,6	4,6	4,6
11,5	11,5	11,5
IEC 254-2; A	IEC 254-2; A	IEC 254-2; A
48 / 420 L	48 / 420 L	48 / 420 L
720	720	720
MOSFET	MOSFET	MOSFET
< 68	< 68	< 68

ROLLERS WIDTH SUBJECT TO CHASSIS WIDTH

XOP2 ^{ac}				XOP3 ^{ac}			
b ₁	880	980	1080	b ₁	1180	1380	
b ₂	880	980	1080	b ₂	1180	1380	
b ₁₁	700	800	900	b ₁₁	1000	1200	
b ₆ min	920	1020	1120	b ₆ min	1220	1420	
b ₆ max	1250	1350	1450 (1710)	b ₆ max	1550	2010	

LIFT HEIGHTS

XOP2 ^{ac}	Monostadio												
h ₁	3400**	3300	3200	3100	3000	2900**	2800	2700	2600	2500	2450	2350	2250
h ₂₅ * (h ₃ +h ₉ +h ₁₃)	3655	3555	3455	3355	3255	3155	3055	2955	2855	2755	2705	2605	2505
h ₂₄ (h ₃ +h ₉)	3590	3490	3390	3290	3190	3090	2990	2890	2790	2690	2640	2540	2440
h ₃	2850	2750	2650	2550	2450	2350	2250	2150	2050	1950	1900	1800	1700
h ₉	740	740	740	740	740	740	740	740	740	740	740	740	740
h ₁₂ (h ₃ +h ₇)	3090	2990	2890	2790	2690	2590	2490	2390	2290	2190	2140	2040	1940
h ₂₈ (h ₁₂ +1600)	4690	4590	4490	4390	4290	4190	4090	3990	3890	3790	3740	3640	3540
h ₄ (h ₃ +h ₆)	5190	5090	4990	4890	4790	4690	4590	4490	4390	4290	4240	4140	4040

LIFT HEIGHTS

XOP2 ^{ac}	Simplex di serie		Simplex										
h ₁	3400**	2900**	2800	2700	2600	2500	2450**	2350	2250**	2250	2250	2250	
h ₂₅ * (h ₃ +h ₉ +h ₁₃)	5930	4930	4730	4530	4330	4130	4030	3830	3630	3430	3230	3030	
h ₂₄ (h ₃ +h ₉)	5865	4865	4665	4465	4265	4065	3965	3765	3565	3365	3165	2965	
h ₃	5125	4125	3925	3725	3525	3325	3225	3025	2825	2625	2425	2225	
h ₉	740	740	740	740	740	740	740	740	740	740	740	740	
h ₁₂ (h ₃ +h ₇)	5365	4365	4165	3965	3765	3565	3465	3265	3065	2865	2665	2465	
h ₂₈ (h ₁₂ +1600)	6965	5965	5765	5565	5365	5165	5065	4865	4665	4465	4265	4065	
h ₄ (h ₃ +h ₆)	7465	6465	6265	6065	5865	5665	5565	5365	5165	4965	4765	4565	

LIFT HEIGHTS

XOP3 ^{ac}	Simplex																						
h ₁	4400*	4300	4200	4100	4000	3900*	3800	3700	3600	3500	3400*	3300	3200	3100	3000	2900*	2800	2700	2600	2500	2450*	2350	2250*
h ₂₅ * (h ₃ +h ₉ +h ₁₃)	7530	7330	7130	6930	6730	6530	6410	6290	6170	6050	5930	5730	5530	5330	5130	4930	4730	4530	4330	4130	4030	3830	3630
h ₂₄ (h ₃ +h ₉)	7465	7265	7065	6865	6665	6465	6345	6225	6105	5985	5865	5665	5465	5265	5065	4865	4665	4465	4265	4065	3965	3765	3565
h ₃	6725	6525	6325	6125	5925	5725	5605	5485	5365	5245	5125	4925	4725	4525	4325	4125	3925	3725	3525	3325	3225	3025	2825
h ₉	740	740	740	740	740	740	740	740	740	740	740	740	740	740	740	740	740	740	740	740	740	740	740
h ₁₂ (h ₃ +h ₇)	6965	6765	6565	6365	6165	5965	5845	5725	5605	5485	5365	5165	4965	4765	4565	4365	4165	3965	3765	3565	3465	3265	3065
h ₂₈ (h ₁₂ +1600)	8565	8365	8165	7965	7765	7565	7445	7325	7205	7085	6965	6765	6565	6365	6165	5965	5765	5565	5365	5165	5065	4865	4665
h ₄ (h ₃ +h ₆)	9065	8865	8665	8465	8265	8065	7945	7825	7705	7585	7465	7265	7065	6865	6665	6465	6265	6065	5865	5665	5565	5365	5165

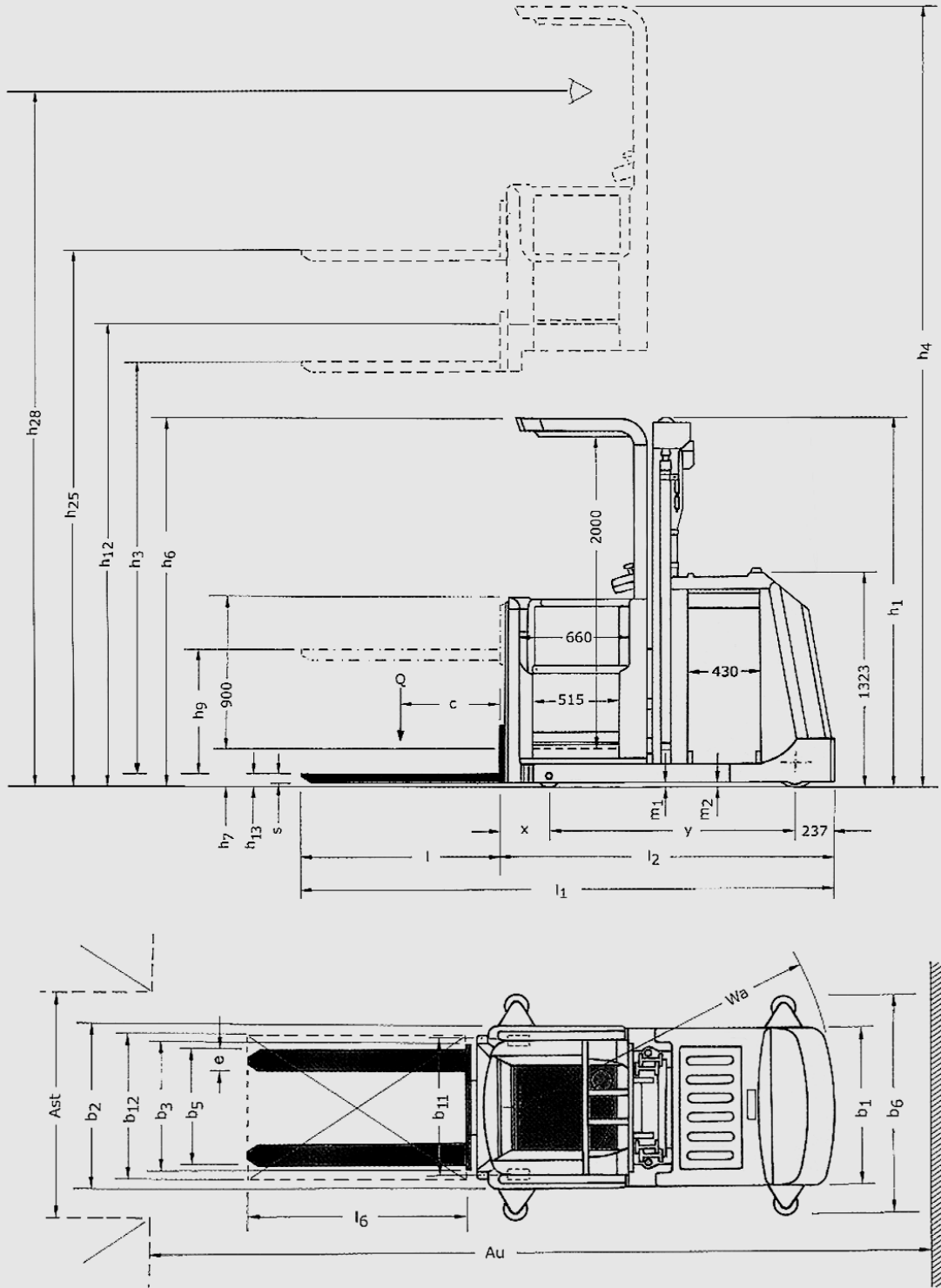
LIFT HEIGHTS

XOP3 ^{ac}	Triplex																								
h ₁	3900*	3800	3700	3600	3500	3400*	3300	3300	3100	3000	2900*	2800	2700	2600	2500	2450*	2350	2250*	2250	2250	2250	2250	2250	2250	2250
h ₂₅ * (h ₃ +h ₉ +h ₁₃)	9445	9145	8845	8545	8245	7945	7785	7625	7465	7305	7145	6845	6545	6245	5945	5795	5495	5195	5045	4895	4745	4595	4445	4295	4145
h ₂₄ (h ₃ +h ₉)	9380	9080	8780	8480	8180	7880	7720	7560	7400	7240	7080	6780	6480	6180	5880	5730	5430	5130	4980	4830	4680	4530	4380	4230	4080
h ₃	8640	8340	8040	7740	7440	7140	6980	6820	6660	6500	6340	6040	5740	5440	5140	4990	4690	4390	4240	4090	3940	3790	3640	3490	3340
h ₂	1560	1460	1360	1260	1160	1060	960	860	760	660	560	460	360	260	160	110	10	-	-	-	-	-	-	-	-
h ₉ (h ₃ +h ₇)	740	740	740	740	740	740	740	740	740	740	740	740	740	740	740	740	740	740	740	740	740	740	740	740	740
h ₁₂ (h ₁₂ +1600)	8880	8580	8280	7980	7680	7380	7220	7060	6900	6740	6580	6280	5980	5680	5380	5230	4930	4630	4480	4330	4180	4030	3880	3730	3580
h ₂₈ (h ₃ +h ₆)	10480	10680	10380	10080	9780	9480	9320	9160	9000	8840	8680	8380	8080	7780	7480	7330	7030	6730	6580	6430	6280	6130	5980	5830	5680
h ₄	10980	10180	9880	9580	9280	8980	8820	8660	8500	8340	8180	7880	7580	7280	6980	6830	6530	6230	6080	5930	5780	5630	5480	5330	5180

* h25 value are calculated for trucks with auxiliary lift diventa lift h9= 740mm

** standard version

All different mast (no standard version) are subject to UPA



XOP2^{ac} XOP3^{ac}

Vertical order pickers



OM XOP2^{ac} e XOP3^{ac} vertical order pickers are compact, powerful vehicles and are capable of picking up h28=10480

Available in two versions: ■ Available in two versions: n with fixed forks, without additional lift additional: ■ with lifting forks with additional lift:

Specifications: ■ Overall chassis width: 880 - 980 - 880 - 980 - 1080 mm ■ Operator platform: width 900 - 1000 - 1100 - 1200 - 1300 - 1400 mm ■ Operator platform height: up to 8880 mm.

Driver's cabin: The ergonomics of the driver's cabin guarantee excellent performance. The suspension of the driver's cabin and the floor of the cabin absorb bumps and rocking which may occur while being driven, or during lifting or lowering. An ample padded backrest offers a relaxing driving position. The low position of the rise and the protection bars on three sides increase the level of safety. A control panel with generously dimensioned controls means fast and safe operation. The control panel can either be used on the column side or on the side of the load. This gives the operator excellent visibility over the picking area or over the driving direction. The control panel has an integrated display which informs the driver of all the functions of the truck. By means of keys it is possible to see and select hours worked, heights, wheel position, battery level, as well as other information for the operators and other workers. Another instrument control panel allows the activation of special functions and the lighting fixed onto the driver's protection roof.

Chassis: The chassis is an extremely rigid steel structure. The engine is protected by a sheet-steel cover which is lifted by gas struts. The battery cover is metal.

Drive: The AC drive motor mounted vertically forms a single drive unit with the transmission, the magnetic brake and the drive wheel. The order picker can be fitted with guide rolls, which are useful in narrow aisles.

Battery: DIN (48V-420) XOP2^{ac} - (48V-620) XOP3^{ac} Ability to change the battery from both sides, by means of a fork lift truck or roller. The flat battery indicator is connected with a lift stop device.

MasterDrive control: ■ Main and auxiliary handling operation optimized; controls are monitored in real-time ■ Fast, safe picking operations thanks to the combined horizontal travel movement and of the cabin lift (diagonal motion along the aisle) ■ Energy recovery for extending operating time ■ Height registering system ■ Differentiated forward and reverse speeds which can be regulated for each gear ■ Simultaneous movements such as gears and lift, are possible even outside the ■ The deadman pedal and the two-hand control protect all movements of gears and lifting ■ An integrated diagnostics and service interface makes configuration and setting parameters easy with the service laptop ■ Permanent error code memory ■ Visualization of error codes

Steering: The standard fit electric steering always takes the wheel to a central position on ignition. The order picker is easily and precisely manoeuvrable.

Type of guidance: free circulation, mechanical guide or inductive.

Masts: The compact construction of the column guarantees stability and torsional rigidity even at elevated heights, guaranteeing increased safety. The excellent visibility through the column and at the sides offers good visibility.

Hydraulic system: The ac pump motor and all hydraulic movements are optimized by start/stop ramps and by the proportional valve damping technology during the movement of loads.

Brakes: The regenerative braking system is automatically activated when the butterfly switch is released. The activation of the start switch in the opposite direction in the same way produces sensitive and smooth braking. Cross-current braking on one side reinforces the braking action and on the other recovers energy. The system of split braking operates almost without wear: the mechanical brake stops the order picker in rest mode and in the case of an emergency stop.

Technical data are given as an indication.

OM Carrelli Elevatori reserves the right to modify them without notice.

OM Carrelli Elevatori S.p.A.
Viale A. De Gasperi, 7
I-20020 Lainate (MI)
Tel.: +39(02)937 65-1
Fax: +39(02)937 65-450
www.om-mh.com

XNA

Technical Data



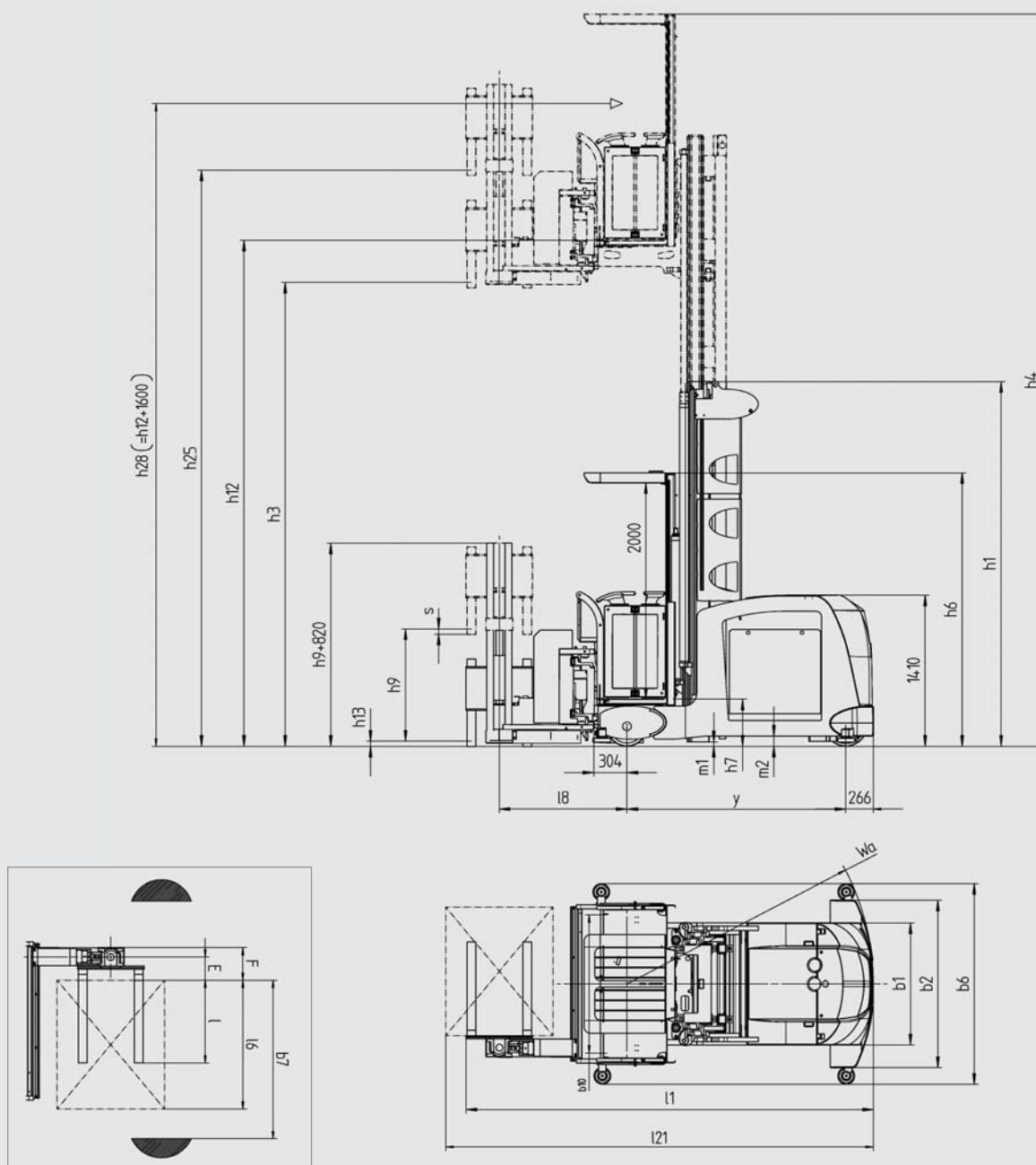
VDI 2198

Specification	1.1	Manufacturer	OM	OM	OM	OM	OM	
	1.2	Manufacturer's model designation	XNA	XNA	XNA	XNA	XNA	
	1.3	Power supply (electric, diesel, petrol, gas, mains electric)	Electric	Electric	Electric	Electric	Electric	
	1.4	Type of control (hand, pedestrian, stand-on, rider seated, order picker)	Stand-on/Rider seated	Stand-on/Rider seated	Stand-on/Rider seated	Stand-on/Rider seated	Stand-on/Rider seated	
	1.5	Capacity / load	Q (kg)	700	900	1100	1300	1500
	1.6	Load centre	c (mm)	600	600	600	600	600
	1.9	Wheelbase	y (mm)	1586	1730	1964	2108	2108
Weights	2.1	Weight (inc. battery)	kg	8163	8902	10275	11362	11362
	2.2	Axle loadings laden drive end/load end	kg	2406 / 5757	2615 / 6287	3034 / 7241	3358 / 8003	3087 / 7945
	2.3	Axle loadings unladen drive end/load end	kg	2859 / 4604	3148 / 4854	3624 / 5551	4008 / 6054	3836 / 5696
Wheels and Tyres	3.1	Tyres (rubber, Vulkollan, pneumatic, polyurethane)		Vulkollan	Vulkollan	Vulkollan	Vulkollan	Vulkollan
	3.2	Tyre size drive end	mm	Ø 400 x 140	Ø 400 x 140	Ø 406 x 170	Ø 406 x 170	Ø 406 x 170
	3.3	Tyre size load end	mm	Ø 370 x 160	Ø 370 x 160	Ø 370 x 160	Ø 370 x 160	Ø 370 x 160
	3.5	Wheels, number (x = drive wheel) drive end/load end		1x / 2	1x / 2	1x / 2	1x / 2	1x / 2
	3.6	Track width (front) load end	b10 (mm)	1290	1290	1290	1290	1290
Dimensions and Overall Sizes	4.2	Closed mast height	h1 (mm)	3900	4400	5400	6400	5400
	4.4	Lift height	h3 (mm)	5200	6200	8200	10000	8200
	4.5	Height, mast raised (h3 + auxiliary lift)	h4 (mm)	7755	8755	10755	12555	10755
	4.7	Height to top of overhead guard (cabin)	h6 (mm)	2555	2555	2555	2555	2555
	4.8	Platform height	h7 (mm)	430	430	430	430	430
	4.11	Auxiliary lift (height of mast = 2520 mm)	h9 (mm)	1675	1675	1675	1675	1675
	4.14	Height, platform raised	h12 (mm)	5630	6630	8630	10430	8630
	4.14.1	Picking height (h12 + 1600 mm)	h12 (mm)	7230	8230	10230	12030	10230
	4.15	Height lowered	h13 (mm)	80	80	80	80	80
	4.19	Overall length without load	l1 (mm)	3206	3350	3584	3728	3728
	4.21	Overall width of chassis	b1/b2 (mm)	1160 / 1500	1160 / 1500	1160 / 1500	1160 / 1500	1160 / 1500
	4.22	Fork dimensions	s/e/l (mm)	50 / 120 / 1200	50 / 120 / 1200	50 / 120 / 1200	50 / 120 / 1200	50 / 120 / 1200
	4.24	Fork carriage width	b3 (mm)	710	710	710	710	710
	4.25	Overall fork width min	b5 min (mm)	470	470	470	470	470
	4.25	Overall fork width max	b5 max (mm)	640	640	640	640	640
	4.27	Width over guide rollers	b6 (mm)	1615	1615	1615	1715	1715
	4.29	Shift, sideways	b7 (mm)	1280	1280	1320	1330	1330
	4.31	Floor clearance under mast, laden	m1 (mm)	40	40	40	40	40
	4.32	Floor clearance, centre of wheelbase	m2 (mm)	87	87	87	87	87
	4.34	Working aisle width with 800 x 1200 pallet lengthwise/crosswise (b12 x l6)	Ast (mm)	1620	1620	1680	1720	1720
	4.35	Outer turning radius	Wa (mm)	1852	1996	2230	2374	2374
	4.38	Distance, swivel fork rotation point	l8 (mm)	999	999	999	999	999
	4.39	Length of traverse arm (distance from shifting frame – fork swivel point)	A (mm)	480	480	480	480	480
	4.40	Width of shifting frame (carriage width)	B (mm)	1440	1440	1440	1440	1440
	4.41	Width of traverse carriage (incl. forks)	F (mm)	250	250	250	250	250
	4.42	Transfer aisle width laden, with pallet a5 4.34	Au (mm)	3628	3772	4003	4150	4150
Performance	5.1	Speed laden/unladen	km/h	9 / 9	9 / 9	12 / 12	12 / 12	12 / 12
	5.2	Lifting speed laden/unladen	m/s	0,47	0,47	0,46	0,46	0,46
	5.3	Lowering speed laden/unladen	m/s	0,45	0,45	0,45	0,45	0,45
	5.4	Reach speed laden/unladen	m/s	0,30	0,30	0,30	0,30	0,30
	5.9	Acceleration time (over 10 m) laden/unladen	s	7 / 7	8 / 7	9 / 8	10 / 9	10 / 9
	5.10	Brakes		Regen. on accelerator release	Regen. on accelerator release	Regen. on accelerator release	Regen. on accelerator release	Regen. on accelerator release
Engine	6.1	Drive motor, rating S2 = 60 min	kW	7	7	7	7	7
	6.2	Hoist motor, rating at S3 = 15%	kW	20	20	24	24	24
	6.3	Battery to IEC 254-2; A, B, C, no		IEC 254-2; A	IEC 254-2; A	IEC 254-2; A	IEC 254-2; A	IEC 254-2; A
	6.4	Battery voltage, capacity K5	V/Ah	PzV, 80 V, 360 Ah	PzV, 80 V, 480 Ah	PzV, 80 V, 700 Ah	PzV, 80 V, 840 Ah	PzV, 80 V, 840 Ah
	6.5	Battery weight +/- 5% (dependent on manufacturer)	kg	1314	1538	1863	2178	2178
Others	8.4	Noise peak at operator's ears	dB(A)	68	68	68	68	68

The values presented are to be taken as indicative and not binding; they refer to the standard equipment

XNA

Technical Data



OM Carrelli Elevatori S.p.A.
 Viale A. De Gasperi, 7
 I-20020 Lainate (MI)
 Tel.: +39(02)937 65-1
 Fax: +39(02)937 65-450
www.om-mh.com

NOH10N

NOH10NH

Specifications

**High level
order pickers**
1.0 tonne

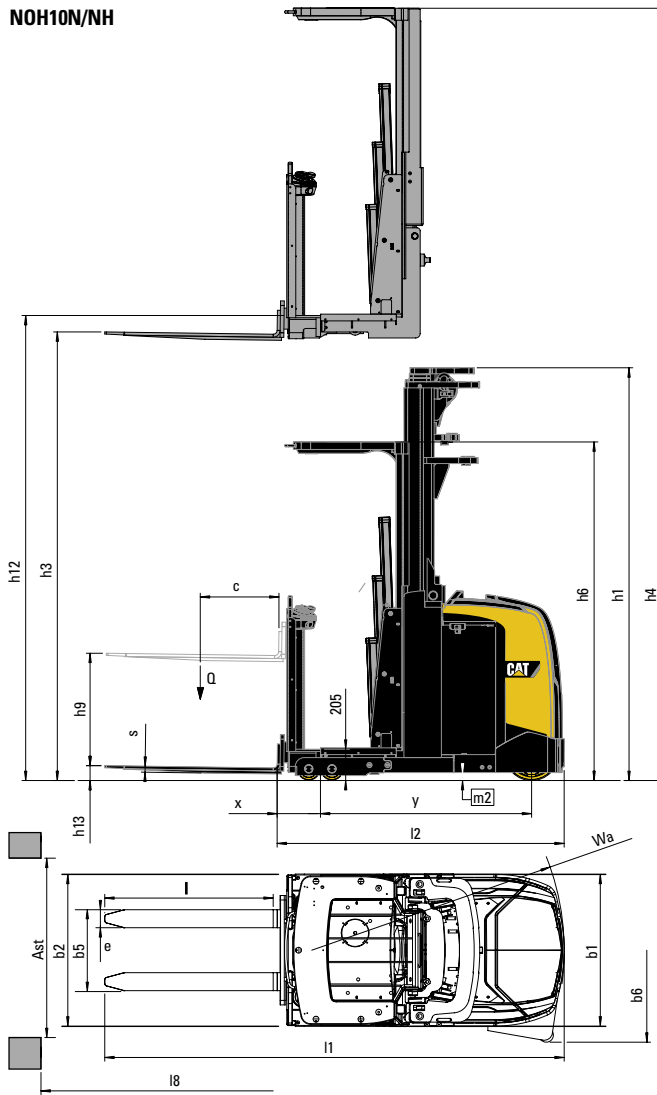


Characteristics			Cat Lift Trucks	Cat Lift Trucks
1.01	Manufacturer (abbreviation)		NOH10N	NOH10NH
1.02	Manufacturer's model designation		Battery	Battery
1.03	Power source: (battery, diesel, LP gas, petrol)		Stand-on	Stand-on
1.04	Operator type: pedestrian, (operator)-standing, -seated		1000	1000
1.05	Load capacity	Q (kg)	400/600	400/600
1.06	Load centre distance	c (mm)	210	210/350
1.08	Load wheel axle to fork face (forks lowered)	x (mm)	1490	1490/1525
1.09	Wheelbase	y (mm)		
Weight				
2.01	Truck weight with nominal load & maximum battery weight	kg	4400*	5200*
2.02	Axle loadings with nominal load & maximum battery weight, drive/load side	kg	1050/3350*	1360/3840*
2.03	Axle loadings without load & with maximum battery weight, drive/load side	kg	1450/1950*	2070/2130*
Wheels, Drive Train				
3.01	Tyres: PT=Power Thane, Vul=Vulkollan, drive/load side		Vul/Vul	Vul/Vul
3.02	Tyre dimensions, drive side	(mm)	360x140	360x140
3.03	Tyre dimensions, load side	(mm)	150x100	150x100
3.05	Number of wheels, drive/load side (x=driven)		1x/4	1x/4
3.06	Track width (centre of tyres), drive side	b10 (mm)	867-1270	867-1270
Dimensions				
4.02	Height with mast lowered (see tables)	h1 (mm)	See tables	See tables
4.04	Lift height (see tables)	h3 (mm)	See tables	See tables
4.05	Overall height with mast raised	h4 (mm)	See tables	See tables
4.07	Height to top of overhead guard	h6 (mm)	2260	2260
4.10	Height of load legs	h8 (mm)	151	151
4.11	Supplementary lift	h9 (mm)	750	750
4.14	Platform height, raised	h12 (mm)	See tables	See tables
4.15	Fork height, fully lowered	h13 (mm)	85	85
4.19	Overall length	l1 (mm)	3250	3250
4.20	Length to fork face (includes fork thickness)	l2 (mm)	2095	2095
4.21	Overall width	b1/b2 (mm)	1016/1000-1590	1016/1000-1590
4.22	Fork dimensions (thickness, width, length)	s / e / l (mm)	40/120/1150	40/120/1150
4.25	Outside width over forks (minimum/maximum)	b5 (mm)	540	540
4.27	Width over guide rollers (min.)		1090	1090
4.32	Ground clearance at centre of wheelbase, (forks lowered)	m2 (mm)	45	45
4.33a	Working aisle width (Ast) with 1000 x1200 mm pallets, load crosswise	Ast (mm)	1400	1400
4.34a	Working aisle width (Ast) with 800 x1200 mm pallets, load lengthwise	Ast (mm)	1300	1300
4.35	Turning circle radius	Wa (mm)	1705	1705, 1745
4.41	Transfer aisle width	l8 (mm)	See tables	See tables
Performance				
5.01	Travel speed, with/without load	km/h	9.0/9.0	9.0/9.0
5.02	Lifting speed, with/without load	m/s	0.20/0.30	0.35/0.40
5.03	Lowering speed, with/without load	m/s	0.40/0.45	0.40/0.45
5.10	Service brakes (mechanical/hydraulic/electric/pneumatic)		Electric	Electric
Electric motors				
6.01	Drive motor capacity (60 min. short duty)	kW	3.5	3.5
6.02	Lift motor output at 15% duty factor	kW	5.0	8.5
6.04	Battery voltage/capacity at 5-hour discharge	V/Ah	24/775	48/465, 775
6.05	Battery weight	kg	591	746, 1119
Miscellaneous				
8.01	Type of drive control		Stepless	Stepless
8.04	Noise level, mean value at operator's ear (EN 12053)	dB(A)	-	-

* Platform height 6100mm



NOH10N/NH



- Ast = Working aisle width
- $Ast = Wa + \sqrt{(l6 + x)^2 + (b12 / 2)^2} + a$
- Wa = Turning radius
- l6 = Pallet length
- x = Load wheel axle to fork face
- b1/b2 = Overall width
- a = Safety clearance = 2 x 100 mm

Lower Cost of Ownership

- A market leading 11.5 meter picking height and fast lowering and travel speeds improve throughput and reduce cycle times, contributing directly to bottom line profits. The NOH10N/NH models are designed for high stability and feature excellent residual capacities.
- AC power gives these trucks excellent levels of performance with minimal maintenance requirements. These trucks are available in 24V (NOH10N) or high performance 48V (NOH10NH) configurations.
- A variety of optional features and programmable performance allows for customization to each users' requirements, ensuring maximum return from your investment.
- Low service costs due to long service interval, reliable, tested components, easy access, quick fault finding, good access to major components and AC technology.

Unmatched Productivity

- The lifting mechanism of the Ergolift is placed below the cabin floor giving the operator very good access to the load from the cabin.
- High picking height and the truck's suitability for use in very narrow aisles permits efficient use of warehouse space.
- Standard lift-height preselector allows a more convenient picking operation.
- Highest lifting speed in the market (NOH10NH).
- PoweRamic mast gives excellent visibility particularly when the truck is travelling with the forks trailing.
- Triplex mast available for applications requiring a low overall height.
- Three different chassis widths and 4 different cabin widths available to allow the truck to be adapted to its application.
- PIN code startup combined with driver specific settings as standard.
- Small turning radius allows for a small transfer aisle.
- AC lifting & driving motors (NOH10NH).
- Up to 775 Ah battery capacity for long shifts.
- Battery rollers included as standard making battery changing a quick and effortless process.

Safety and Ergonomics

- Split control unit provides good pallet access, and reduces the risk of the operator accidentally touching the controls when leaning outside the cabin. The controls can be placed mast or fork side.
- Redesigned ergonomic controls, including a joystick and a inductive hand detector for safe operation inside the aisle.
- Smoothly shaped lightweight aluminium side gates for comfortable orderpicking and a comfortable, height adjustable backrest.
- Specially designed floormat prevents slipping.
- Double load wheels for extra stability and low step in height of 205 mm.

Options

- Wire guidance and two versions of rail guidance (40 mm and 100 mm height) possible.
- Automatic braking at the end of the aisle.
- Special design covers.
- Key switch to replace the PIN code.
- Working lights and cabin lights.
- Various fork lengths and widths.
- Liftstop with override function.
- Automatic stop in case of obstacles in the aisle.

Cat[®] Lift Trucks.

Your partner in materials handling.

NOH10N					
Mast Type	h12	h1	h4	h3+h9+h13	h12+1500
	mm	mm	mm	mm	mm
D	3200	2237	5250	3830	4700
	3500	2417	5550	4130	5000
	4200	2757	6250	4830	5700
	4800	3032	6850	5430	6300
	5200	3237	7250	5830	6700
	6200	3737	8250	6830	7700
T	4100	2237	6150	4730	5600
	4600	2237	6650	5230	6100
	5100	2417	7150	5730	6600
	6100	2757	8150	6730	7600
	7000	3032	9050	7630	8500
	7700	3437	9750	8330	9200
	8100	3577	10150	8730	9600

Mast Performance and Capacity

D	Duplex PoweRamic mast
T	Triplex PoweRamic mast
h1	Lowered mast height
h4	Raised mast height
h12	Platform height
h3+h9+h13	Maximum fork height
h12+1500	Order picking height

NOH10NH					
Mast Type	h12	h1	h4	h3+h9+h13	h12+1500
	mm	mm	mm	mm	mm
D	3200	2237	5250	3830	4700
	3500	2417	5550	4130	5000
	4200	2757	6250	4830	5700
	4800	3032	6850	5430	6300
	5200	3237	7250	5830	6700
	6200	3737	8250	6830	7700
T	4100	2237	6150	4730	5600
	4600	2237	6650	5230	6100
	5100	2417	7150	5730	6600
	6100	2757	8150	6730	7600
	7000	3032	9050	7630	8500
	7700	3437	9750	8330	9200
	8100	3577	10150	8730	9600
	8600	3737	10650	9230	10100
	9300	3997	11350	9930	10800
	10000	4207	12050	10630	11500

MINIMUM TRANSFER AISLE WIDTH*			
	NOH10N		NOH10NH
	775 Ah	465 Ah	775 Ah
1200 x 1000 cross wise	3256	3256	3422
1200 x 800 cross wise	3080	3080	3242
1200 x 800 length wise	3371	3371	3546

* Including 200 mm clearance and 1000 mm or 1150 mm forks

catliftruck@mcf.nl
www.catliftruck.com

WESC1139(05/09)ok
Copyright ©2009, MCFE. All rights reserved.
CATERPILLAR, CAT, their respective logos,
'Caterpillar yellow' and the 'POWER EDGE' trade dress,
as well as corporate and product identity used herein,
are trademarks of Caterpillar and may not be used
without permission.
Printed in The Netherlands

NOTE: Performance specifications may vary depending on standard manufacturing tolerances, vehicle condition, types of tyres, floor or surface conditions, applications, or operating environment. Trucks may be shown with non-standard options. Specific performance requirements and locally available configurations should be discussed with your Cat lift trucks Dealer. Cat Lift Trucks follows a policy of continual product improvement. For this reason, some materials, options and specifications could change without notice.

CAT[®] Lift Trucks